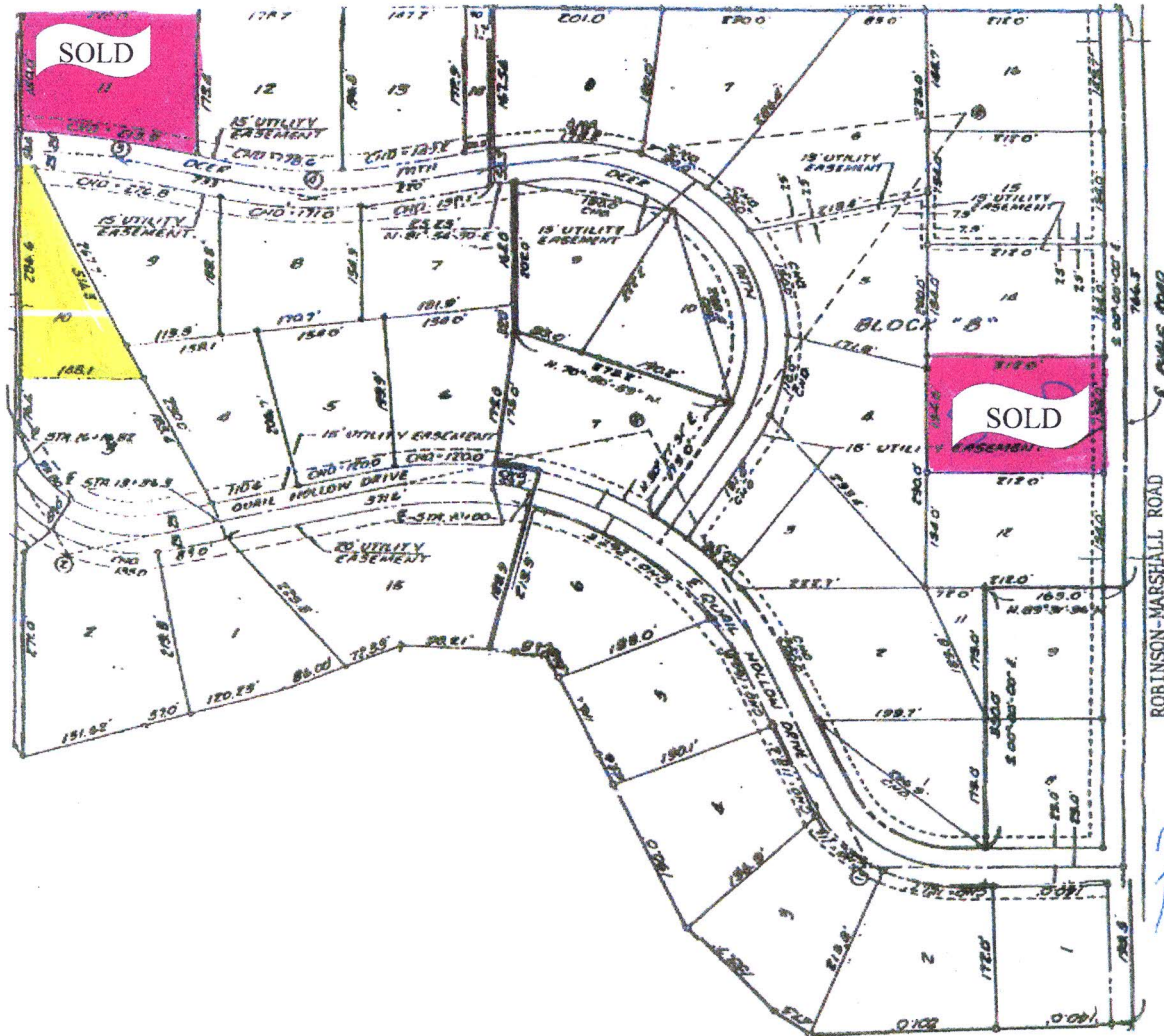


Crawford County Real Estate, Inc.
1203 W. Main
Robinson, IL 62454
(618) 544-8605 ** (618) 544-9335 fax
www.crawford-county.com (web site) ** ccre@crawford-county.com (email)



OWNER: Roth Enterprises

DESCRIPTION: Lot #10, Block C, Quail Hollow
Irregular

TAXES: '16 \$124.40

ZONED: RD

PRICE: \$15,000

Tax I.D. #05-1-27-402-027-000

LISTED BY: Gayle McKee